

# PHASE



# OMEGA



SINGLE-PHASE INPUT & OUTPUT | 120 V & 240 V  
NEMA 3R OUTDOOR ENCLOSURE | 1/3-2 HP

# OMEGA DRIVE

## FEATURES

### Long Lasting Durability

With enhanced internal components and advanced engineering, the Omega Drive is built to last. The increased component size helps reduce heat buildup and electrical stress, improving reliability and extending its lifespan. With our new Omega Drive you can expect consistent performance under tough conditions.

### Single-Phase

The Omega Drive is designed for versatility, with the capability to run 2-wire and 3-wire single-phase motors. This flexibility makes it an ideal solution for a wide range of applications.

### Warranty

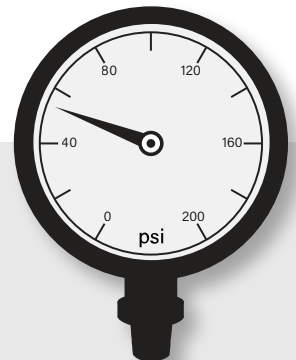
Phase Technologies backs the Omega Drive with a three-year warranty, including one-year no-questions-asked, ensuring your peace of mind.

## Perfect Pressure™

### Easy Setup Wizard

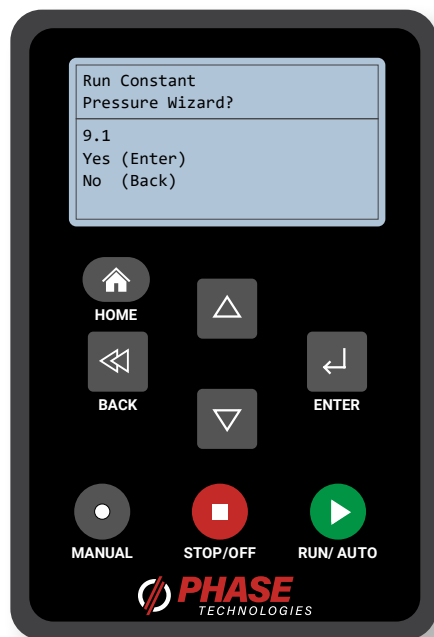
- ▶ Setup Constant Pressure in Minutes
- ▶ Large Backlit Display with Intuitive Menus
- ▶ Simple Messages in Clear English

The Perfect Pressure™ Easy Setup Wizard is a user-friendly tool integrated into our VFDs to simplify the configuration of constant water pressure systems. Upon initial startup, the wizard guides users through a series of prompts to establish the desired settings. This streamlined process allows for quick and efficient setup, often requiring only a few minutes to complete.





# DRIVE ATTRIBUTES



## Large Graphic Display

Enjoy enhanced durability, a superior feel, and improved responsiveness with our easy-to-use keypad. Simple buttons make it quick to navigate settings for a straightforward Omega Drive setup.

## Durability & Improved Engineering

The Omega Drive is a rugged, high-performance variable frequency drive built for long-lasting durability. Designed to reset the industry standard in residential VFD's, the Omega Drive features:

- ▶ **50°C (122°F) Temperature Rating**
- ▶ **2x Overload Capacity Compared to Our Competition**
- ▶ **2x Input Transient Voltage Rating Compared to the Competition**
  - Handles Over 1,200 Volts of Transient Peak-to-Peak Voltage
- ▶ **Standard EMI Choke Included**
  - Reduces Light Flickering and Interference with Other Electronics
- ▶ **Standard Output Reactor Included**
  - Designed for Running Single-Phase Motors

## Single-Phase Input & Output

### Compatible with Two-Wire & Three-Wire Motors

Our Omega Drive provides single phase input and output for easy residential and light commercial constant pressure installations for both two and three wire pump motors.



Large Graphic Display



Simple Constant Pressure Setup



Simple Installation



Easy Setup Wizards



NEMA 3R  
(Outdoor Enclosure)

Product Specifications

120 V / 240 V	Motor Horsepower	Rated Output Current	Voltage	Motor Type	Temperature Rating
	1/3 - 2 HP	14 A	90 V - 260 V	Single-Phase	50°C (122°F)



**PRODUCT** BUILDER

[PHASETECHNOLOGIES.COM/PRODUCTS](https://phasetechnologies.com/products)



UP-TO-DATE

- ✓ LEAD TIMES
- ✓ PRICING
- ✓ DIMENSIONS

CONSTANT PRESSURE SYSTEM

The Omega Drive is engineered to maintain consistent water pressure throughout your home, regardless of demand. Unlike traditional systems that are subject to pressure fluctuations and weak flow as demand increases, the Omega Drive dynamically adjusts speed and flow to ensure steady, reliable water pressure at all times.

The Omega Drive offers solutions for a range of single-phase motor applications. No matter your residential water system needs, we deliver an all-in-one package for reliable performance, efficiency, and longevity.

Omega Drive Solutions

- ▶ Constant Pressure Throughout Your Home, No Matter the Water Demands
- ▶ Longevity of Pump and Motor
- ▶ Consistent Reliability Regardless of Conditions
- ▶ Simple Setup

